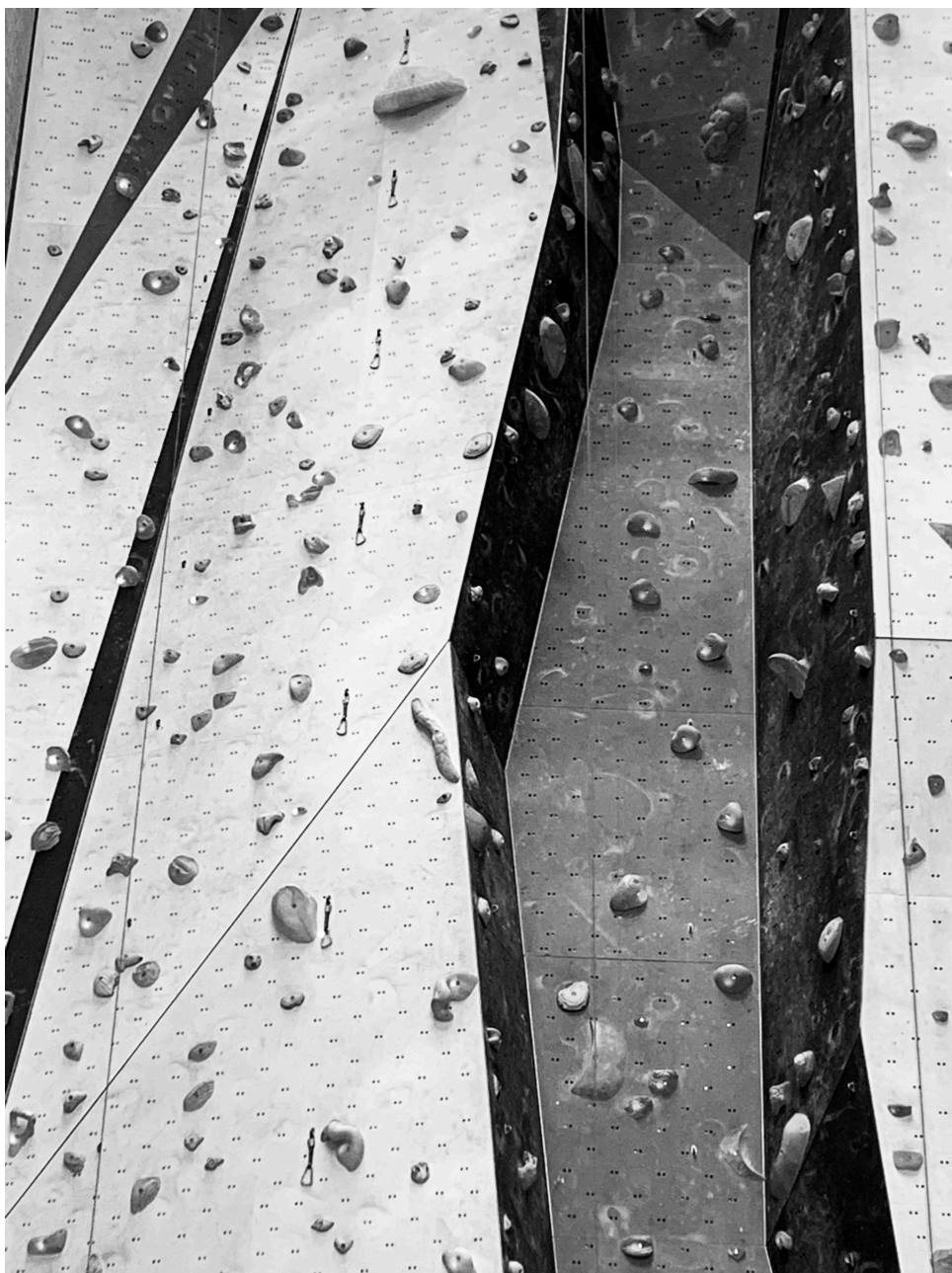



Kameliya Markovska
Animation



I thought for my resit to do a research on the climbing hall I go to. It is in Sofia, Bulgaria. 

The research question to be:

Does the space make certain people feel excluded?

To answer to the question why I chose this place - I think climbers are a very interesting “breed” of people, so to say. I consider myself to be one of them, however I have a long way to walk to be “accepted” as a climber.

Nonetheless, the wall is something that unites all people inside the hall.

I have been going to the climbing hall almost every day for the last two months and what I have been noticing, following and drawing could be seen through the following videos and images:

Body movements in space:

How do you move in this space?

Are there other bodies involved?

Who are they?

What are their movement and orientation?

How are social groups specially organised?

I have edited this video to answer these questions:

<https://vimeo.com/kameliyamarkovska/review/495531541/f5bfed26a7>

Password: climb

The Spacial Setting:

Which objects are involved in the space?

Where are objects positioned?

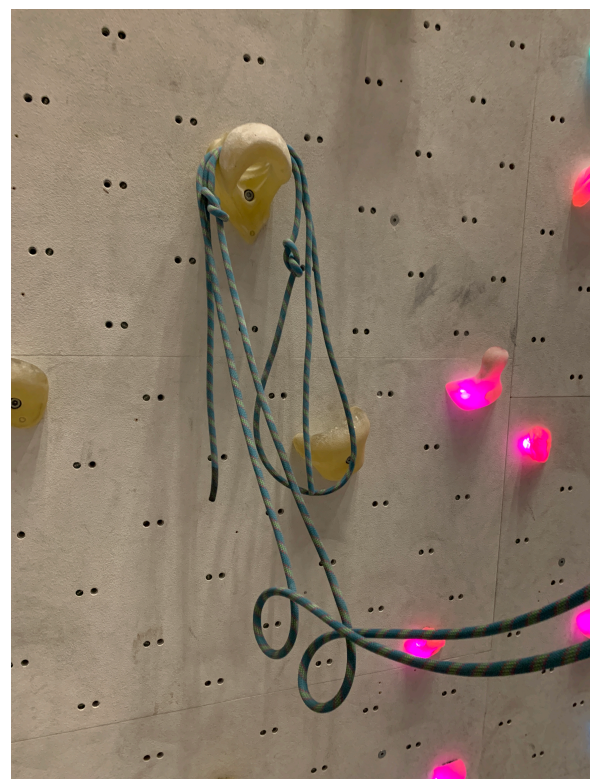
What are their scales?

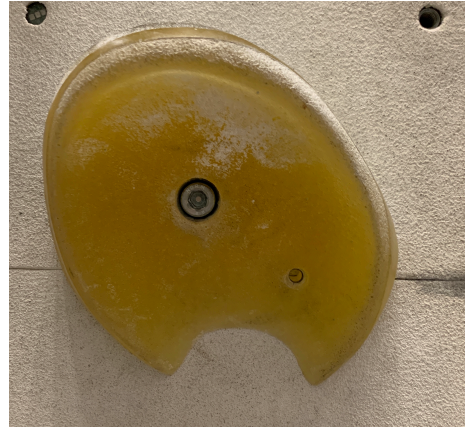
For who is the space designed for?

Is the design of the setting inclusive?

If not, who does it exclude?

The hall is very accepting of different people and you can see a lot of foreigners often. Also, there are group courses for children. What is really nice as well is that there are often courses with people who have not climbed before and you can see how people start with the sport and may be who would stay and who will not. However, the type of diversity of people that I have not seen there is body-types. I also have a friend who I am trying to convince to come along with me and climb together, however she is very shy of her body and is afraid that she would not be able to do anything. So I would say that the fact that people may see you not being able to do an easy path might be worrisome.







The wider context of the space:

How does the space relate to its surrounding?

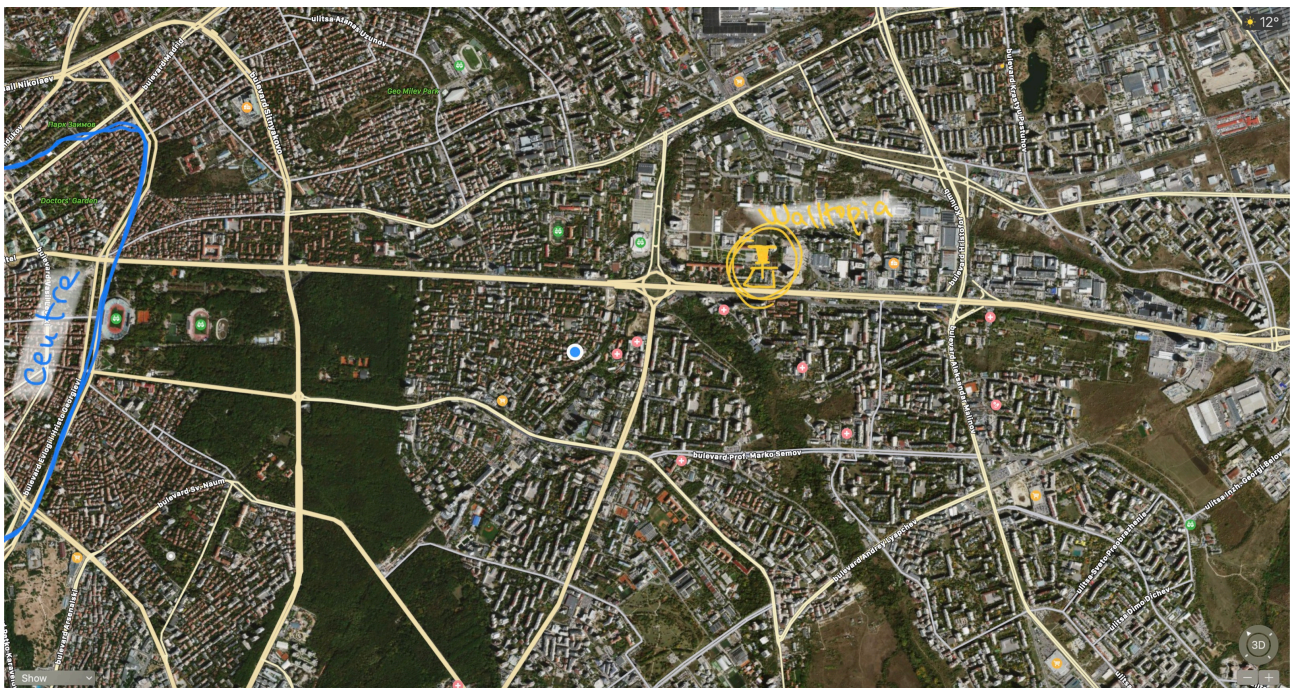
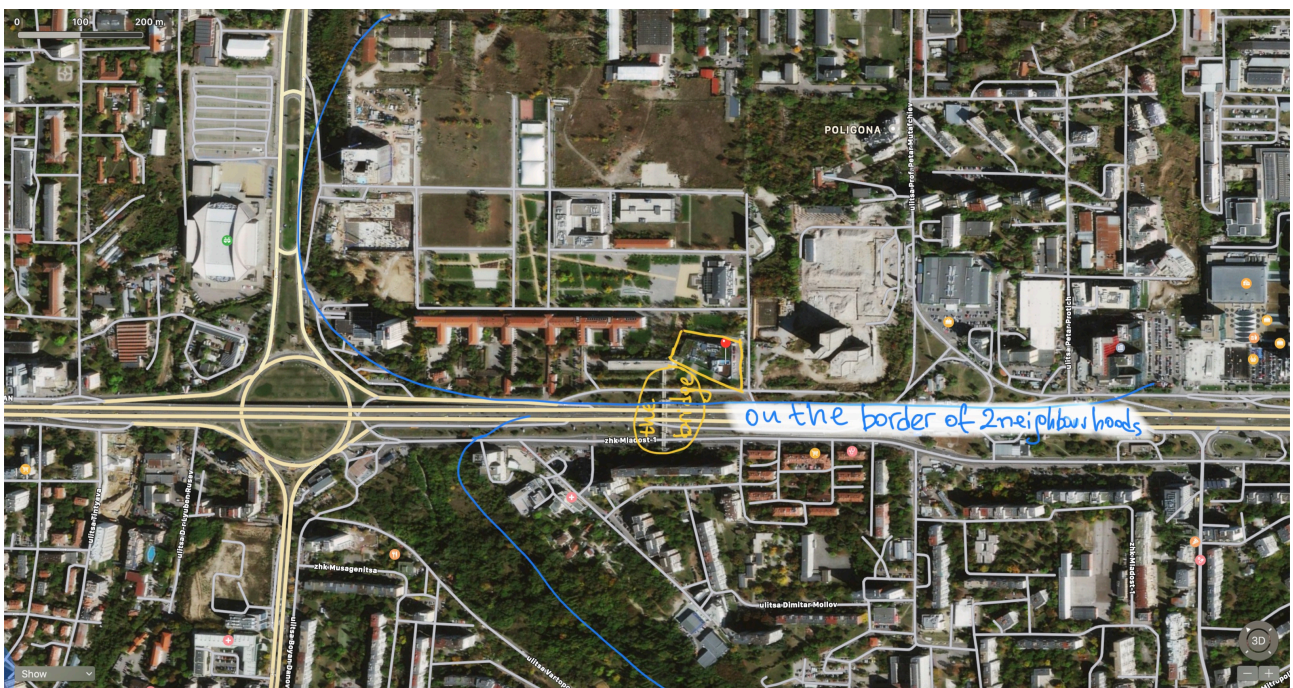
Where is it positioned in the city or in a neighbourhood?

Can we find similar places in the city, as well?
Where?

When has the space been designed? By who?

Who decided for the location?

Has the space evolved in the past few years? How? And why?





Walltopia, the building with address Boulevard "Tsarigradsko shose" 111V, Sofia, Bulgaria is the headquarters and also the climbing wall hall that many people go to, including myself. It is positioned in a very good place, because the big boulevard that you see in front of the building is one of the biggest in the city and connects it to the centre very fast. The area is relatively good neighbourhood - people are nice but infrastructure is old socialistic and post-socialistic, so this modernist building is in big contrast to the buildings surrounding it. Also, above in the screenshots of the boulevard, you can see a bridge which they build especially for the Walltopia centre.

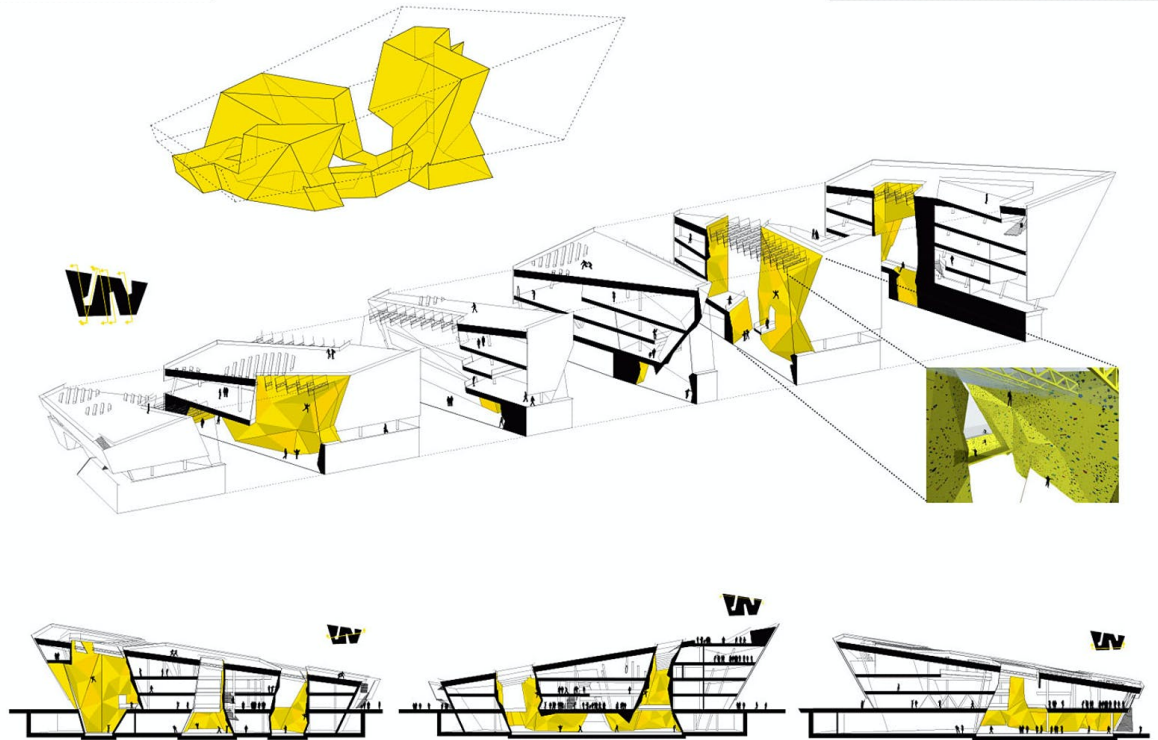
Walltopia is not the only place for climbing - there is also a climbing wall in the Student's Town, which is a neighbourhood full of students and universities. There is also one in the city centre - in Sofia University. However, as we can read everywhere in the internet when we look up Walltopia - it is the leading wall-building company worldwide, so it is of really high standard and equipment.

The building has a very interesting design. The architecture is modern and designed by MARS architects, an Indian architecture firm.

It is in the shape of a W for Walltopia. Here I attach some of the design plans from the site of MARS:

SYSTEM

WALL WORLD



SYSTEM

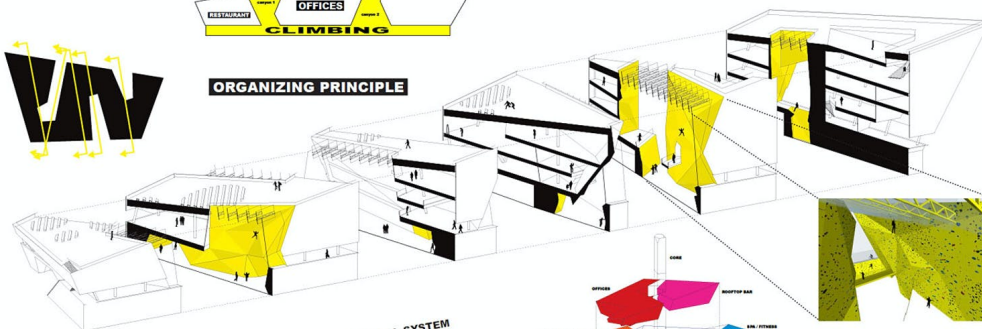
MAIN LAYOUT



SINKING THE CLIMBING FLOOR
ACHIEVES MAXIMUM HEIGHT AND
SEPARATION FROM PUBLIC FLOWS

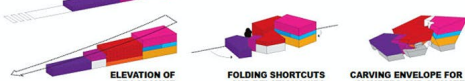
2

ORGANIZING PRINCIPLE



FOLDING THE PROGRAM ACHIEVES A COMPACT SPATIAL SYSTEM

PROGRAMMATIC SEQUENCE



ELEVATION OF PROGRAMME

FOLDING SHORTCUTS AND RELATIONSHIPS

CARVING ENVELOPE FOR CLIMBERS AND CLIMATE

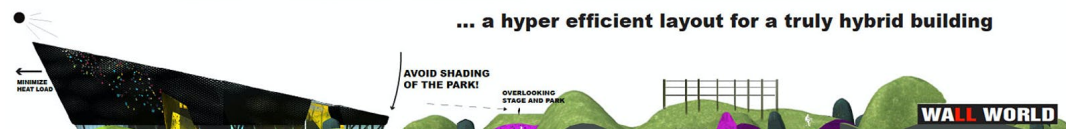
CONTINUE PARK IN ROOF LANDSCAPE

CLIMB VIA FACADES OR ROOF TO BAR WITH MOUNTAIN VIEW

5 ROCKS 3 ATRIUMS
1 SINGLE FLUID LAYOUT

SPATIAL STEPS

... a hyper efficient layout for a truly hybrid building





I found this video that gives very good representation of these questions:
<http://www.collider.eu/design/>

On the other side of the questions posed is the not-so-technical answer.
So, what I want to show with working on this space is how the presence of different groups of people change the dynamics of the space.

What are your observations and conclusions on the conditions of the location researched, starting from the reason and question at the heart of the research?

To answer the question I think the space design is interesting and in general - a common space - open, which is inclusive. There are a lot of common spaces, which people share. Standing, watching, discussing, learning, helping each other out and supporting/encouraging is part of a climber's climbing experience in the hall. This is a thing that has always been interesting to me. However, I think with the presence of different groups of people, this dynamic changes.

Theory:

For the theory essay I will write on a topic, which is a bit more general - nature and outdoor activities.

The research question is:

What is the relationship between nature and men?